

HAYASHIO MARU

Ocean-going Salvage Tug



PARTICULARS OF “HAYASHIO MARU”

IMO No./Official No./Call Sign	9400447 / 140390 / 7JBS
Flag/ Port of Registry	Japan / Tokyo
Classification	NK, NS*, Tug, MNS* designed for salvage purpose
When built	April 2007
G.R.T. (Int'l) / G.R.T. (JG)	497 / 322
Length (O.A.) x Breadth x Depth	45.13m x 10.00m x 4.30m
Speed	11.5 knots (cruising) / 13.6 knots (maximum)
Range	6,350 miles (at 11.5 knots)
Main Engines/Total Output	Niigata marine diesel, 6L28HX, 2 x 2,000 bhp (1,471KW) / 4,000 bhp
Certified Bollard Pull	53.09 tf
Propulsion	2 x Niigata ZP-31, 5 x bladed FPP (rudder propeller)
Bow-thruster	Electric propulsion, CPP, 3.5-tf thrust, designed for DPS
Navigational Equipment	Dynamic positioning system (Kongsberg cPos) , 2 x DGPS, 2 x Radar, ARPA, ERC, AIS, Doppler speed log, Echo sounder
Main Generators	Yanmar diesel, 6HAL2-HTN, 2 x 360ps (265KW) x 1800rpm, 2 x AC445V x 300KVA (240KW)
Towing Winch/ Tugger Winches	Towing winch: 1 x drum, 294/147kN x 9.5/18m/min, Brake capacity 784.8kN (80tf) Towing wire rope : 1 x 50mm dia. x 700m Stern roller: 1 x 1.5m dia. x 4m SWL 588kN (60tf) Towing pins: 994kN (100tf) Tugger winches: (stbd aft) 98/49kN x 13.5/27m/min, (port aft) 49kN x 27m/min, (fore) 98/49kN x 14.5/29m/min
Crane	1 x hydraulic telescopic crane, 49.0/19.6kN at 7/10m
External Fire-fighting	Electric control fire-fighting monitor (water or foam 1,000 liters/min at 1.0Mpa)
Flat Deck Space / Capacity	Cargo deck area: 18m x 8.6m (154.8m ²), Cargo deck capacity: 110 tons Deck strength: 49kN(5tf)/m ²
Complement	25 persons inclusive of 7 crewmembers
Tank Capacities	Fuel capacity : 257m ³ Fresh water capacity : 65m ³ (distilling plant 5m ³ /day)

PRINCIPAL SALVAGE EQUIPMENT

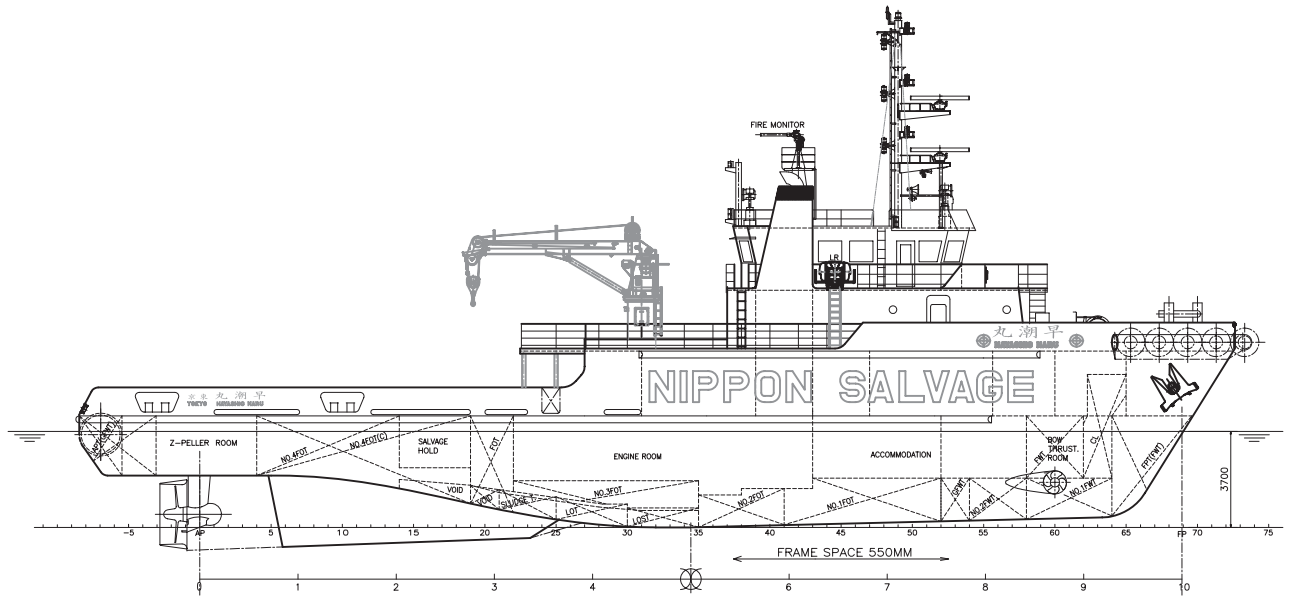
Outboard engine work boat, pneumatic fender, Dyneema & synthetic ropes, steel wire ropes, diving equipment, patching equipment, oil spill control equipment, salvage pumps, compressor, portable generator, surface welding/cutting equipment, underwater welding/cutting equipment, pendant wire ropes, shackles, etc.

※All details are believed to be correct but not guaranteed.

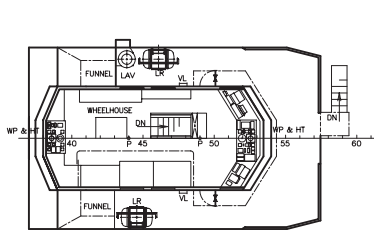


The Nippon Salvage Co., Ltd.

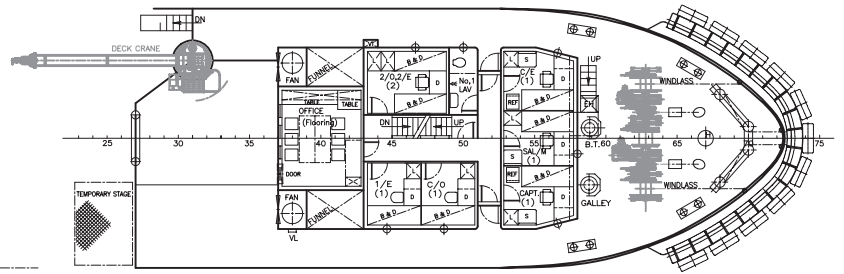
Ocean-going Salvage Tug HAYASHIO MARU (早潮丸)



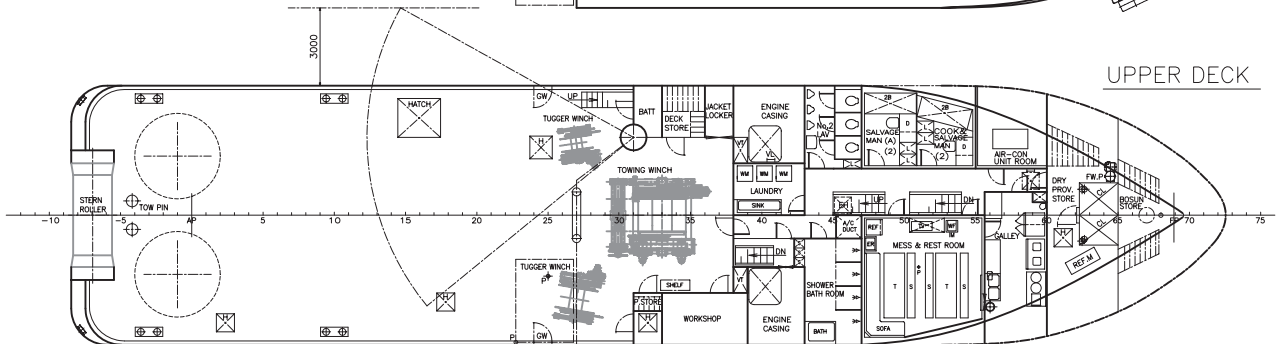
NAV. BRIDGE DECK



F'CLE DECK



UPPER DECK



BOTTOM PLAN

