

# KAISHIN

Salvage/Multipurpose Work Barge



## PARTICULARS OF “KAISHIN”

Classification	NK
When built / Flag	April 2016 / Japan
Registered gross tonnage	3,042 tons
Deadweight	1,362 tons
Length × Breadth × Depth	70.03 m × 26.00 m × 5.00 m

## INSTALLATIONS

Deck machinery	8 × Single drum winches (operable by one man) (rating : 20/6.7 tons × 11/33 m/min, brake capacity 60 tons) Windlass × 1 (type: AC14 2.85 ton chainφ48 mm × 9 shackles)
Navigation	DGPS, Wind Sensor, Radar, AIS
Thrusters	SCHOTTEL SPJ57 Pump-jet × 4
Accommodation	58 Berths
Tank Capacity	Oil collection tank total 873.2 m <sup>3</sup> , fresh water tank 1,999.67 m <sup>3</sup> , fuel tank 180.18 m <sup>3</sup>
Generator	YANMAR 300 kVA × 440 V × 3, 440V × 500A power supply available
Construction Feature	Open Moon Pool (6.0 m × 4.0 m) for SAT and ROV
Positioning System	Dynamic Positioning System Kongsberg Maritime K-POS DP-21(Dual System)
Diving System	Portable Saturation Diving System (Class LR) Design Depth 300m, 6-men Deck Decompression Chamber

※All details are believed to be correct but not guaranteed.



The Nippon Salvage Co., Ltd.

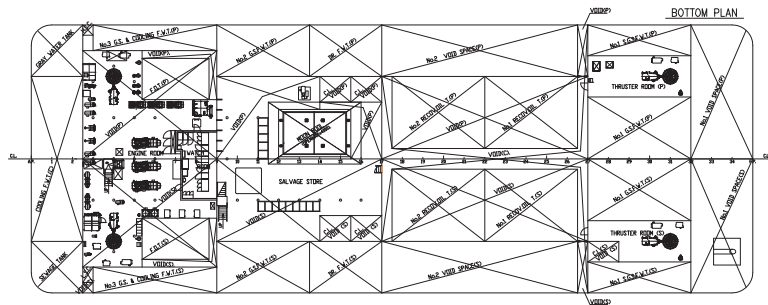
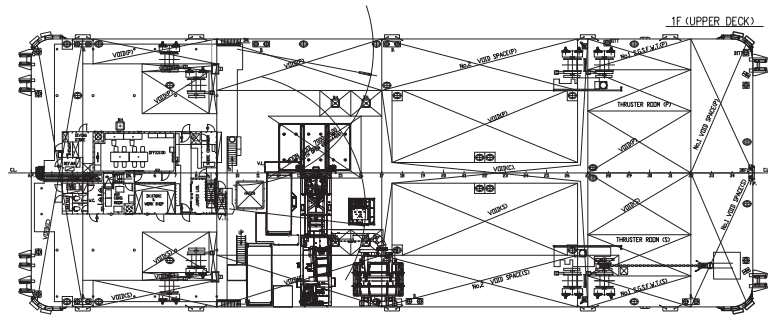
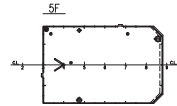
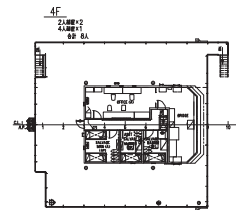
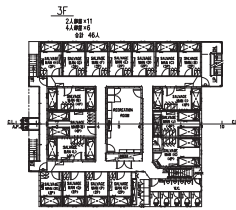
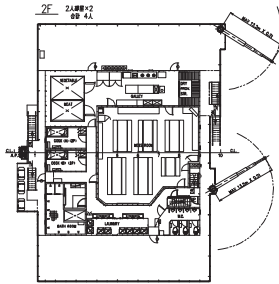
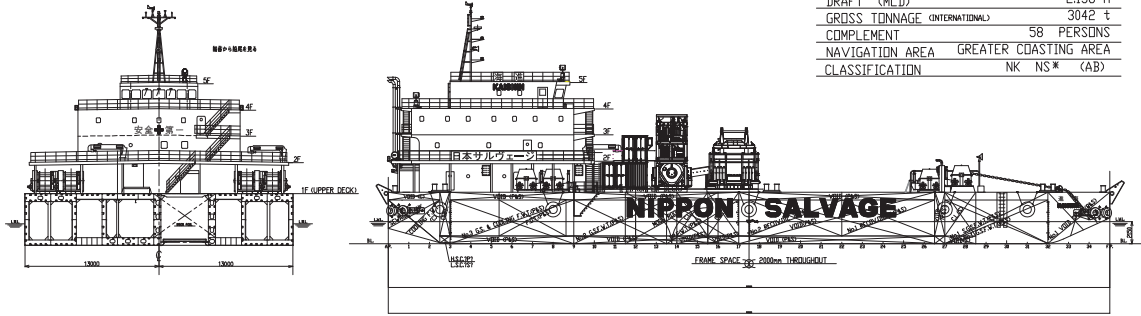
# Salvage / Multipurpose Work Barge

## KAISHIN (海進)

### PROFILE

#### PRINCIPAL DIMENSIONS

LENGTH(OA)	70.03 m
BREADTH(MLD)	26.00 m
DEPTH (MLD)	5.00 m
DRAFT (MLD)	2.138 m
GROSS TONNAGE (INTERNATIONAL)	3042 t
COMPLEMENT	58 PERSONS
NAVIGATION AREA	GREATER COASTING AREA
CLASSIFICATION	NK NS* (AB)



The Nippon Salvage Co., Ltd.